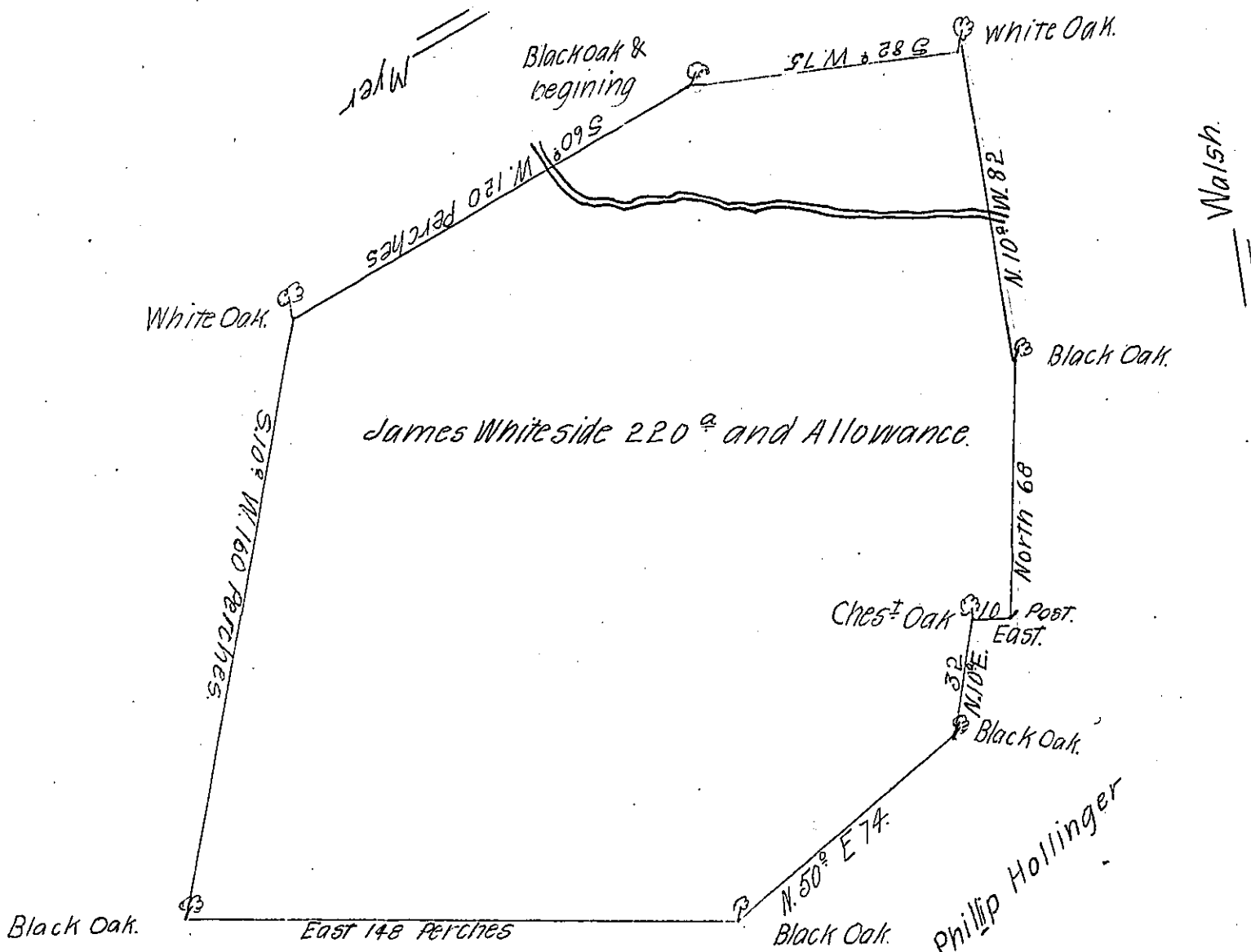


FORM NO. 1.



A Draught of a Tract of Land situate in Lebanon Township in the County of Lancaster containing Two Hundred and Twenty Acres and the Allowance of Six Acres & Cent for Roads and Highways, Surveyed the 1<sup>st</sup> day of March 1747 by Thomas Cookson Esquire late Deputy Surveyor of Lancaster County for James Whiteside in pursuance of a Warrant bearing date at Philadelphia the 15<sup>th</sup> day of August 1746.

Protracted from McCookson's Field Book & Calculated

Geo. Stevenson one obl.  
the Exec<sup>ts</sup> of Tho<sup>s</sup> Cookson D obl.

To Nicholas Scull Esquire }  
Surveyor General.

IN TESTIMONY that the above is a copy of the original remaining on file in the Department of Internal Affairs of Pennsylvania, made conformably to an Act of Assembly approved the 16th day of February 1833, I have hereunto set my hand and caused the Seal of said Department to be affixed at Harrisburg, this fifth day of June 1907

*Henry Howard*  
Secretary of Internal Affairs.